

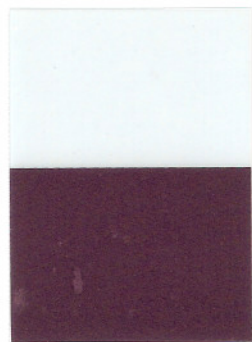
虹彩 Interference



底色 Base colors



KC 201 5-25 μm
缎金
Fine gold satin



KC 211 5-25 μm
缎红
Red satin



KC 221 5-25 μm
缎蓝
Blue satin



KC 223 5-25 μm
缎紫
Violet satin



KC 231 5-25 μm
缎绿
Green satin



KC 205 10-60 μm
珍珠白金
Platinum pearl



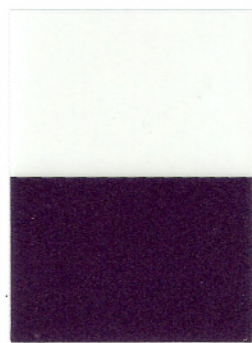
KC 205A 10-60 μm
珍珠黄金
Golden pearl



KC 215 10-60 μm
珍珠红
Red pearl



KC 217 10-60 μm
珍珠紫铜
Copper pearl



KC 218 10-60 μm
珍珠艳红
Flamboyant pearl



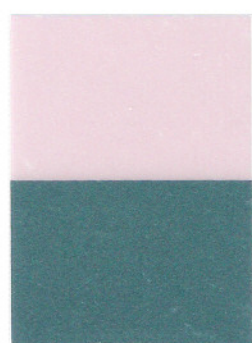
KC 219 10-60 μm
珍珠紫
Violet pearl



KC 224 10-60 μm
紫罗兰
Violaceous



KC 225 10-60 μm
珍珠蓝
Blue pearl



KC 235 10-60 μm
珍珠绿
Green pearl



KC 249 10-100 μm
闪光金色
Shimmer gold

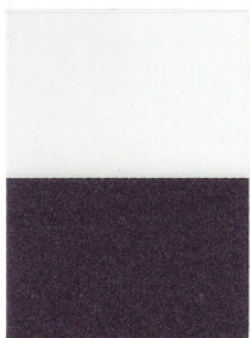


KC 259 10-100 μm
闪光红色
Shimmer red

虹彩 Interference



底色 Base colors



KC 269 10-100 μm
闪光艳红色
Shimmer rose red



KC 289 10-100 μm
闪光蓝色
Shimmer blue



KC 299 10-100 μm
闪光绿色
Shimmer green

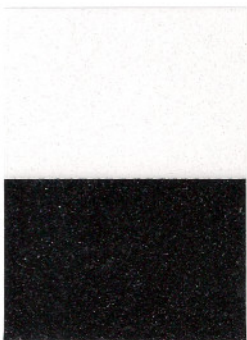
银白 Silver White



KC 161 50-150 μm
闪烁珍珠
Glitter pearl



KC 163 40-200 μm
闪烁珍珠
Shimmer pearl



KC 183 40-300 μm
特闪珍珠
Special flash pearl

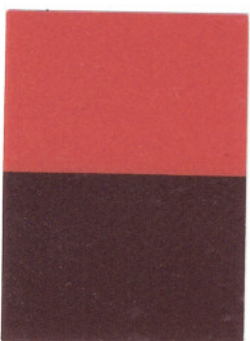


KC 193 50-700 μm
超闪珍珠
Super flash pearl

圣达菲 Santa Fe Series



KC 2615 10-60 μm
红黄
Red yellow



KC 2619 10-60 μm
紫黄
Violet yellow



KC 2625 10-60 μm
蓝橙
Blue orange

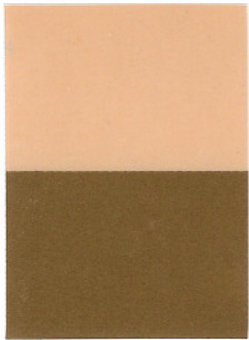


KC 2635 10-60 μm
黄绿
Yellow green

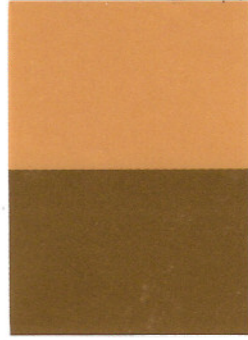
金色 Gold Luster



底色 Base colors



KC 302 5-25 μm
缎金色
Gold satin



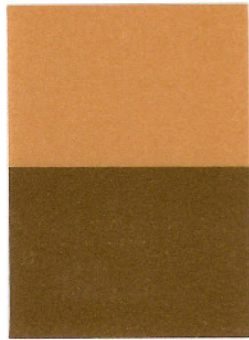
KC 323 5-25 μm
皇室缎金
Royal gold satin



KC 319 10-40 μm
皇室红金
Royal red golden



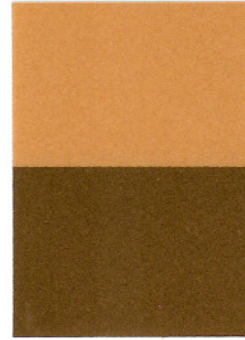
KC 300 10-60 μm
珍珠金黄
Gold pearl



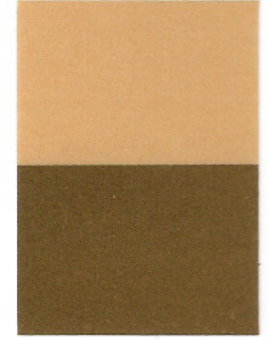
KC 303 10-60 μm
皇室金色
Royal gold



KC 304 10-60 μm
玛雅金
Mayan gold



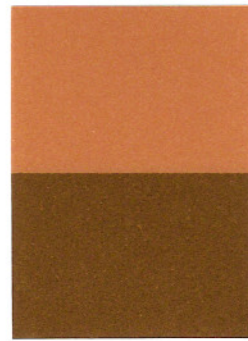
KC 305 10-60 μm
阿兹特克金
Aztec gold



KC 306 10-60 μm
奥林匹克金
Olympic gold



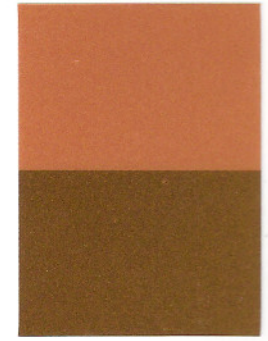
KC 307 10-60 μm
绿口青金
Turquoise gold



KC 309 10-60 μm
红金
Reddish gold



KC 310 10-60 μm
黄金色
Golden pearl



KC 313 10-60 μm
皇室艳金色
Royal deep gold



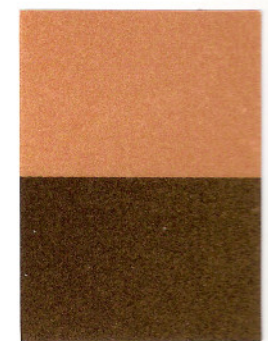
KC 320 10-60 μm
明亮金色
Bright gold



KC 351 10-100 μm
阳光金色
Sunny gold



KC 353 20-100 μm
红光金色
Reddish gold



KC 355 20-100 μm
闪烁金色
Glitter gold

金色 Gold Luster



底色 Base colors



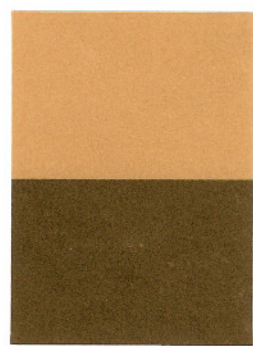
KC 3001 40-200 μ m
闪烁珍珠金黄
Sparkle gold



KC 3531 40-200 μ m
闪烁红光金色
Sparkle reddish gold



KC 3501 5-25 μ m
柔光金黄
Soft luster gold



KC 3502 10-40 μ m
缎光金黄
Satin luster gold



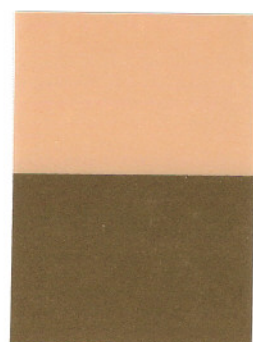
KC 3503 10-60 μ m
光泽金黄
Luster gold



KC 3504 20-100 μ m
亮光金黄
Brilliant gold



KC 3505 40-200 μ m
闪光金黄
Flash gold



KC 602 5-25 μ m
超级缎金
Super gold satin



KC 600 10-60 μ m
珍珠金色
Gold pearl



KC 603 10-60 μ m
皇家金色
Imperial gold



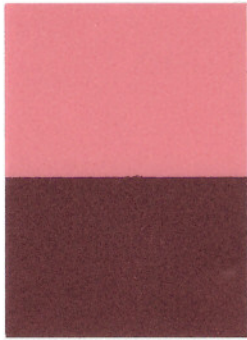
KC 605 10-60 μ m
阿兹特克金
Aztec gold

KC3501至KC3505系列超黄金色突破了常规云母铁钛色相，具有更强烈金属光泽和更高黄金色度涂饰效果，产品从5-25 μ m开始至50-200 μ m能满足对金色系列产品在于遮盖率、高闪烁的要求，真正达到黄金般使用效果。

着色及幻彩 Colour & Pigmentation



底色 Base colors



KC 4625 10-60 μ m
深干涉红
Interference red



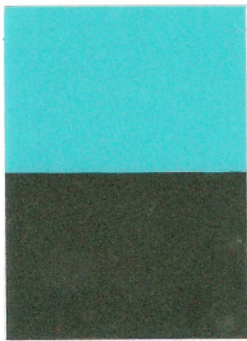
KC 4627 10-60 μ m
深干涉蓝
Interference blue



KC 4628 10-60 μ m
干涉黄
Interference yellow



KC 4629 10-60 μ m
深干涉绿
Interference green



KC 4701 10-60 μ m
金绿
Golden green



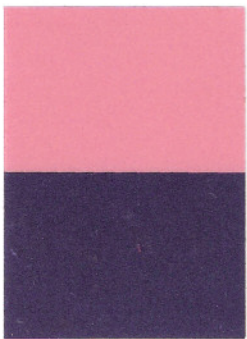
KC 4702 10-60 μ m
金蓝
Golden blue



KC 4703 10-60 μ m
杏黄
Apricot peart



KC 4704 10-60 μ m
金紫
Golden violet



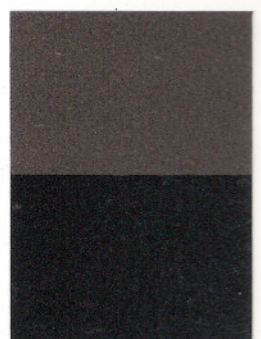
KC 4705 10-60 μ m
紫薇
Indigo pearl



KC 4706 10-60 μ m
紫桐
Special purple



KC 4707 10-60 μ m
金栗
Gold chestnut



KC 402 10-60 μ m
银黑
Silver black



KC 410 10-60 μ m
铜棕色
Cupreous-Brown



KC 411 10-60 μ m
深棕色
Nuts-Brown



KC 430 20-100 μ m
闪烁铜棕
Glitter cupreous-Brown

金属铁 Metallics



底色 Base colors



KC 520 5-25 μm
青铜缎
Bronze satin



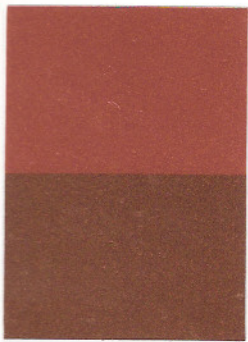
KC 522 5-25 μm
红棕缎
Red-Brown satin



KC 524 5-25 μm
葡萄酒红缎
Wine red satin



KC 525 5-25 μm
紫红缎
Mauve satin



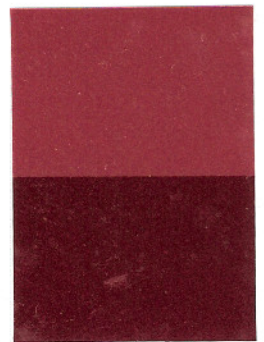
KC 500 10-60 μm
青铜
Bronze



KC 502 10-60 μm
棕红
Red-Brown



KC 503 10-60 μm
红棕
Brown



KC 504 10-60 μm
葡萄酒红
Wine red



KC 508 10-60 μm
宝石红
Ruby



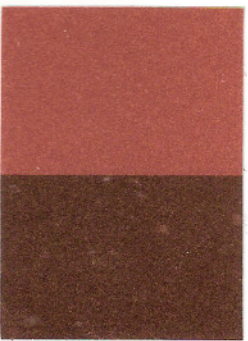
KC 505 10-60 μm
紫红
Mauve



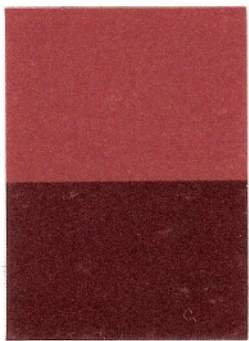
KC 509 10-60 μm
褐绿色
Breen



KC 510 10-60 μm
咖啡色
Coffee



KC 530 10-100 μm
闪光青铜
Glitter bronze



KC 532 10-100 μm
闪光红棕
Glitter red-brown



KC 533 10-100 μm
闪光枣红
Glitter jujube red



KC 534 10-100 μm
闪光葡萄酒红
Glitter wine red

